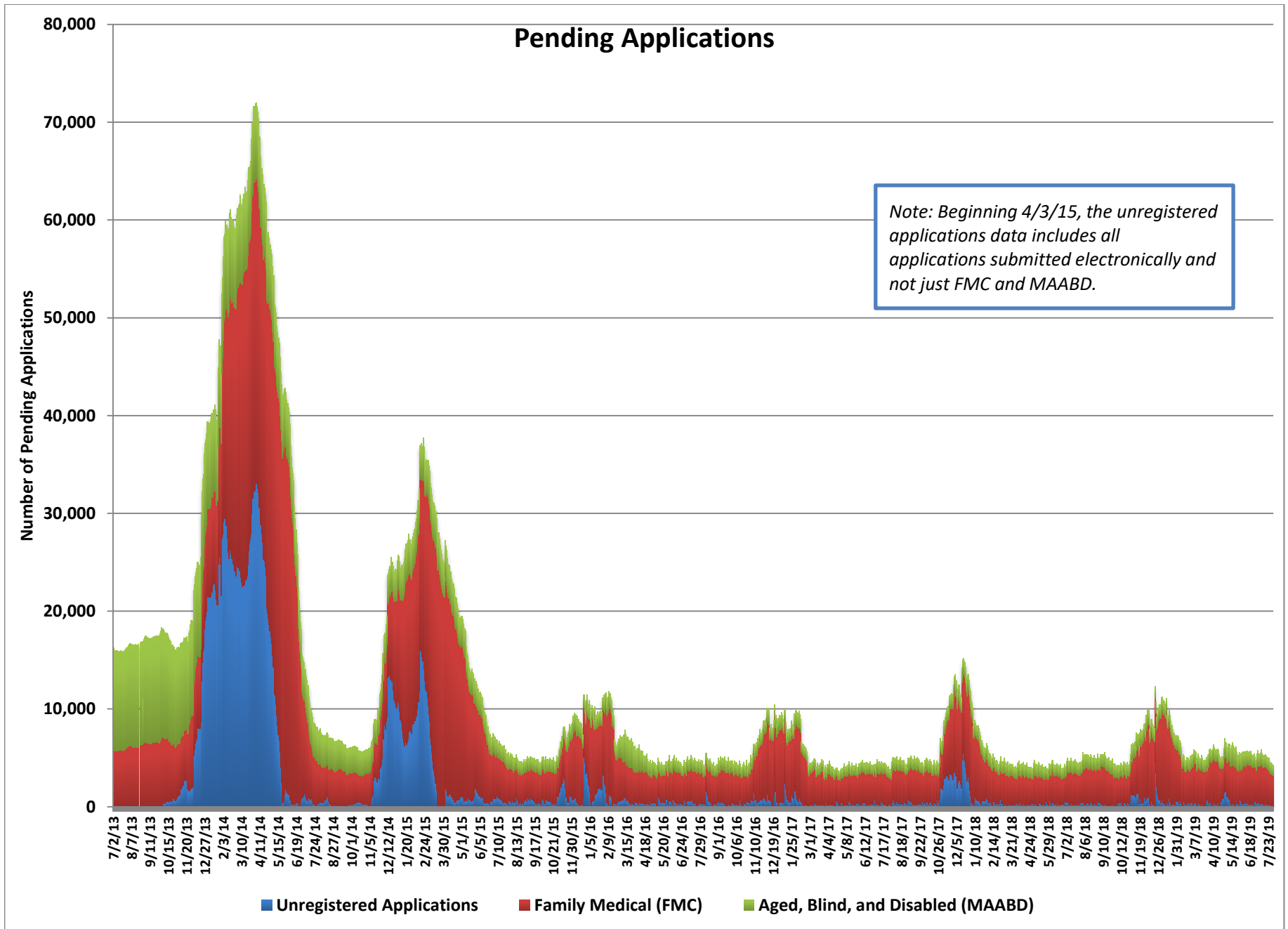


# Medicaid Chart Pack

---

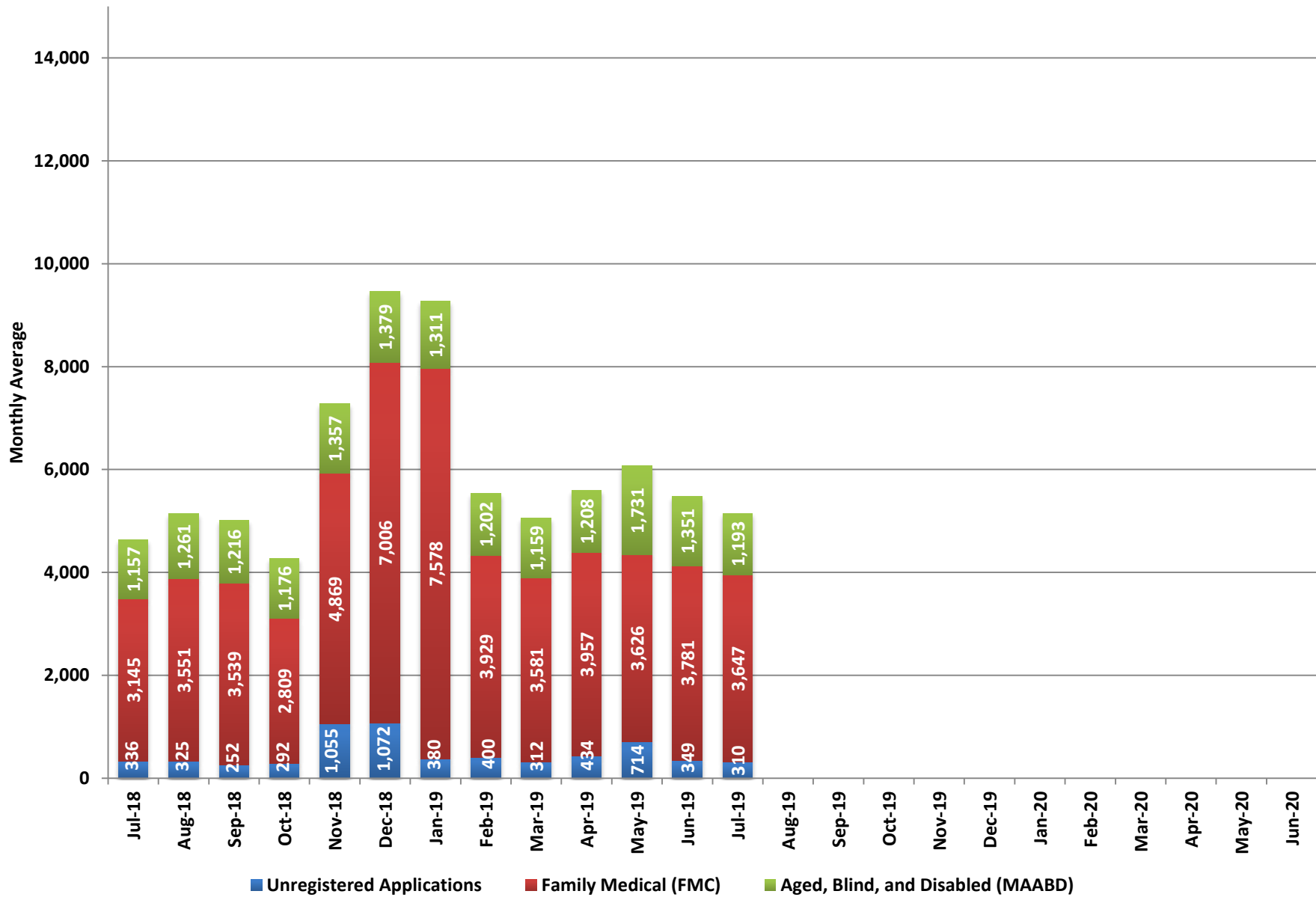
**August 2019**



## Pending Applications

Date	Unregistered Applications	Family Medical (FMC)			Aged, Blind, and Disabled (MAABD)				Total Medicaid Pending Applications
		Pending <= 45 Days	Pending > 45 Days	Total Applications	Pending <= 45 Days	Pending 46-90 Days	Pending > 90 Days	Total Applications	
7/1/19	526	3,707	15	3,722	1,065	179	69	1,313	5,561
7/2/19	333	3,776	13	3,789	1,086	155	70	1,311	5,433
7/3/19	384	3,697	10	3,707	1,064	132	71	1,267	5,358
7/5/19	639	3,728	11	3,739	1,043	135	72	1,250	5,628
7/8/19	405	3,908	11	3,919	1,037	154	71	1,262	5,586
7/9/19	351	3,983	11	3,994	1,062	145	70	1,277	5,622
7/10/19	258	4,040	9	4,049	1,086	134	71	1,291	5,598
7/11/19	220	3,909	10	3,919	1,044	119	71	1,234	5,373
7/12/19	478	3,745	11	3,756	1,037	109	72	1,218	5,452
7/15/19	345	3,756	15	3,771	1,036	117	69	1,222	5,338
7/16/19	283	3,831	16	3,847	1,027	122	69	1,218	5,348
7/17/19	206	3,815	22	3,837	1,000	121	68	1,189	5,232
7/18/19	170	3,714	22	3,736	992	105	69	1,166	5,072
7/19/19	343	3,645	24	3,669	973	108	68	1,149	5,161
7/22/19	282	3,647	23	3,670	965	127	65	1,157	5,109
7/23/19	203	3,515	22	3,537	933	133	59	1,125	4,865
7/24/19	244	3,339	22	3,361	944	130	53	1,127	4,732
7/25/19	136	3,257	22	3,279	931	117	54	1,102	4,517
7/26/19	465	3,125	18	3,143	940	112	55	1,107	4,715
7/29/19	227	3,262	18	3,280	919	131	54	1,104	4,611
7/30/19	206	3,284	14	3,298	900	126	53	1,079	4,583
7/31/19	126	3,195	12	3,207	909	116	58	1,083	4,416

## Pending Applications (Monthly Average)



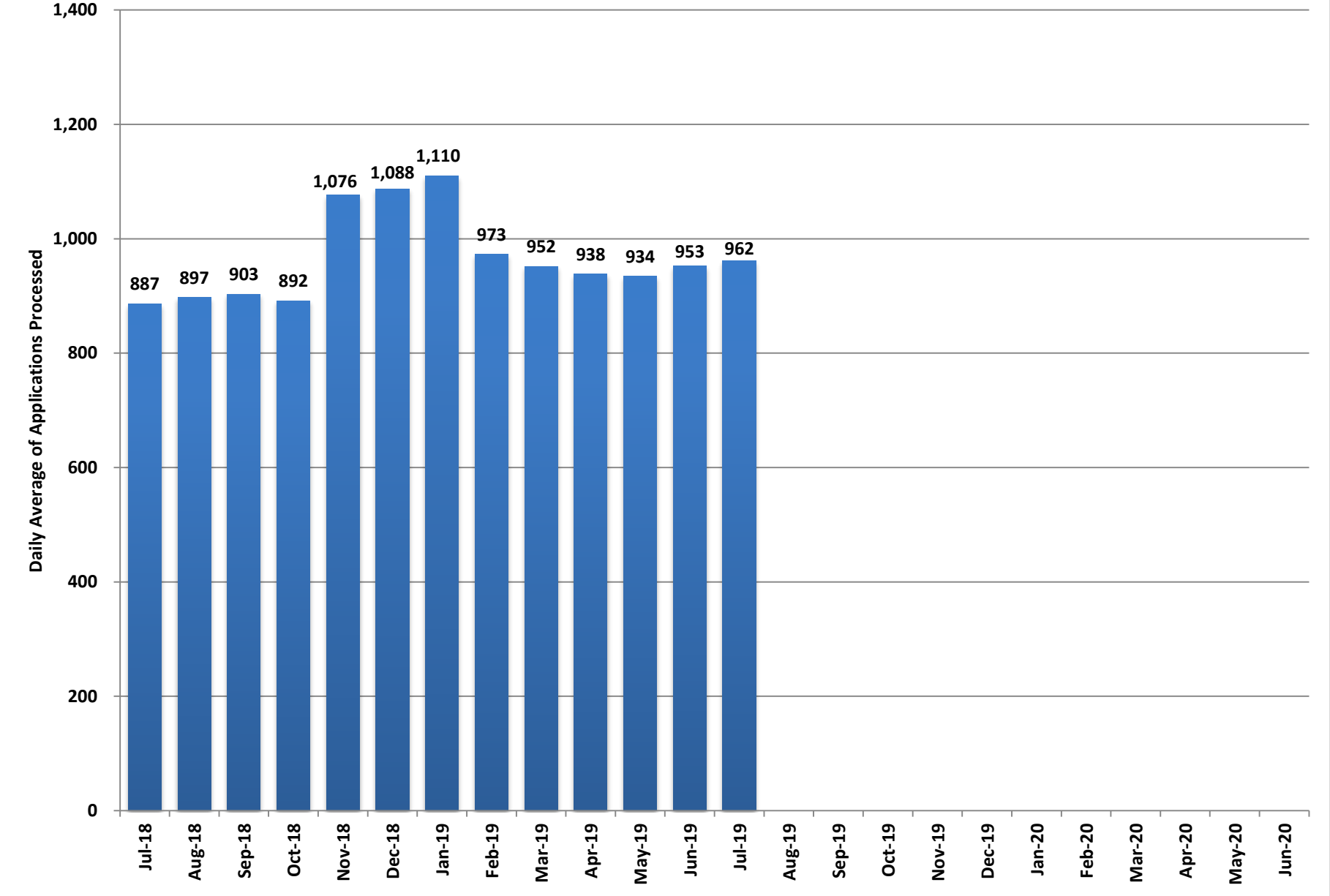
**Pending Applications  
(Monthly Averages)**

Month	Unregistered Applications	Family Medical (FMC)			Aged, Blind, and Disabled (MAABD)				Total Medicaid Pending Applications
		Pending <= 45 Days	Pending > 45 Days	Total Applications	Pending <= 45 Days	Pending 46-90 Days	Pending > 90 Days	Total Applications	
Jul-18	336	3,116	29	3,145	987	112	58	1,157	4,639
Aug-18	325	3,521	30	3,551	1,097	110	55	1,261	5,137
Sep-18	252	3,505	34	3,539	1,029	127	60	1,216	5,008
Oct-18	292	2,776	33	2,809	990	124	62	1,176	4,276
Nov-18	1,055	4,834	35	4,869	1,164	124	69	1,357	7,281
Dec-18	1,072	6,962	44	7,006	1,198	102	80	1,379	9,457
Jan-19	380	7,507	71	7,578	1,125	118	68	1,311	9,269
Feb-19	400	3,856	73	3,929	1,024	113	65	1,202	5,532
Mar-19	312	3,561	20	3,581	997	106	57	1,159	5,053
Apr-19	434	3,934	23	3,957	1,058	95	55	1,208	5,599
May-19	714	3,607	20	3,626	1,559	113	60	1,731	6,072
Jun-19	349	3,767	13	3,781	1,143	146	62	1,351	5,481
Jul-19	310	3,631	16	3,647	1,000	129	65	1,193	5,150
Aug-19									
Sep-19									
Oct-19									
Nov-19									
Dec-19									
Jan-20									
Feb-20									
Mar-20									
Apr-20									
May-20									
Jun-20									

**Fiscal Year Averages**

Fiscal Year	Unregistered Applications	Family Medical (FMC)			Aged, Blind, and Disabled (MAABD)				Total Medicaid Pending Applications
		Pending <= 45 Days	Pending > 45 Days	Total Applications	Pending <= 45 Days	Pending 46-90 Days	Pending > 90 Days	Total Applications	
FY15	3,376	6,810	3,357	10,167	1,369	498	1,129	2,997	16,405
FY16	797	4,150	28	4,178	974	162	271	1,407	6,382
FY17	486	3,961	27	3,988	938	84	56	1,079	5,552
FY18	835	3,909	47	3,956	1,030	91	50	1,172	5,963
FY19	493	4,246	35	4,281	1,114	116	62	1,292	6,067
FY20 YTD	310	3,631	16	3,647	1,000	129	65	1,193	5,150

### Medicaid Applications Processed per Working Day

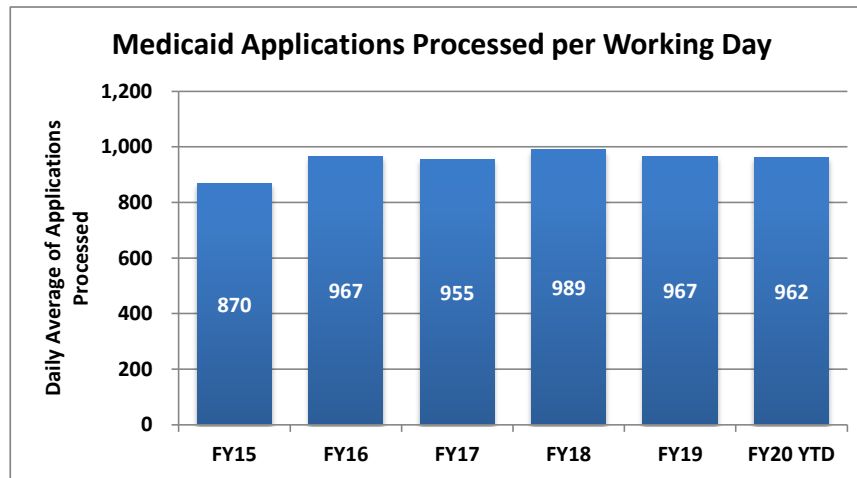


## Pending Applications Processed Per Day

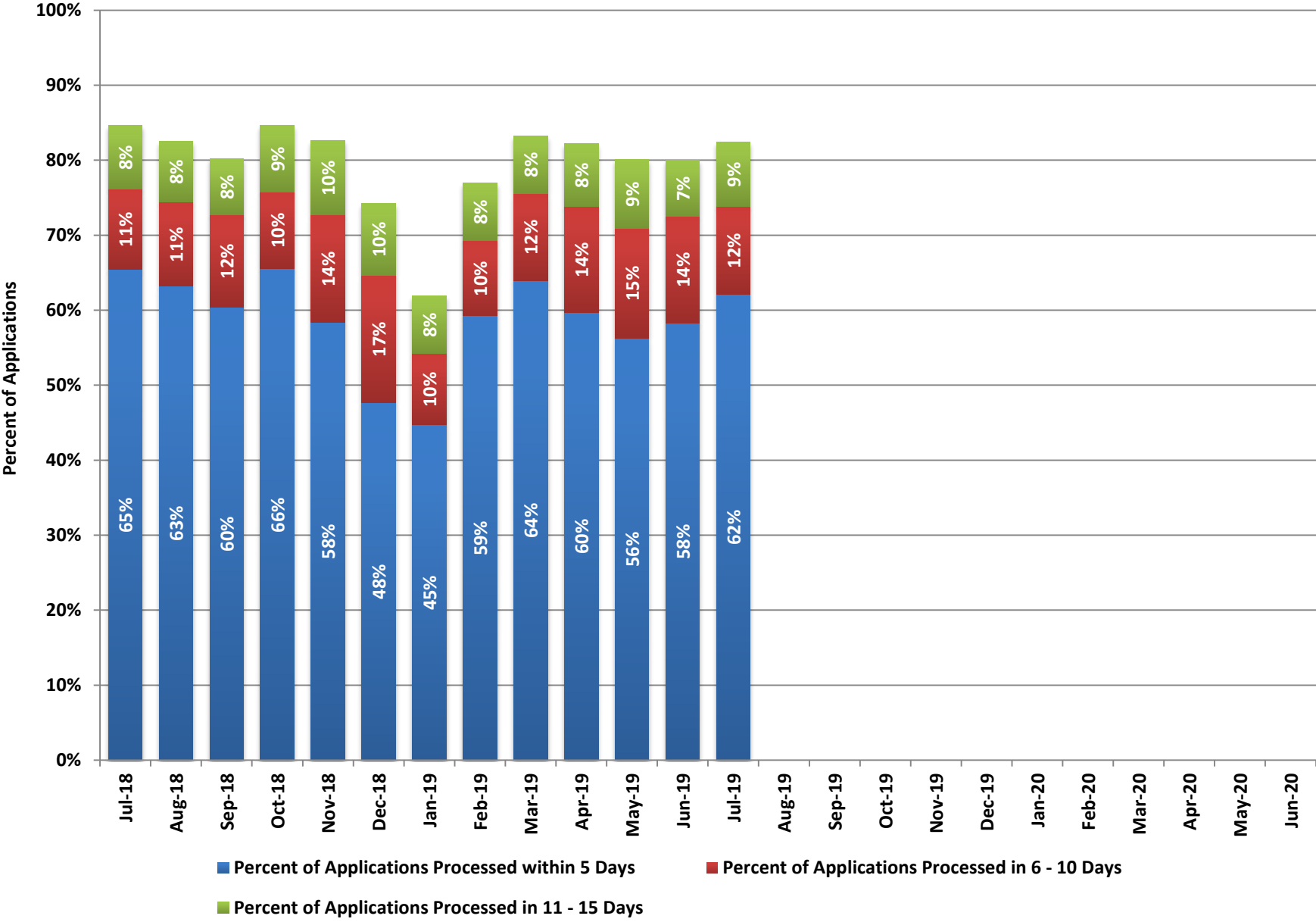
Month	Medicaid Applications Processed per Working Day
Jul-18	887
Aug-18	897
Sep-18	903
Oct-18	892
Nov-18	1,076
Dec-18	1,088
Jan-19	1,110
Feb-19	973
Mar-19	952
Apr-19	938
May-19	934
Jun-19	953
Jul-19	962
Aug-19	
Sep-19	
Oct-19	
Nov-19	
Dec-19	
Jan-20	
Feb-20	
Mar-20	
Apr-20	
May-20	
Jun-20	

### *Fiscal Year Averages*

Fiscal Year	Medicaid Applications Processed per Working Day
FY15	870
FY16	967
FY17	955
FY18	989
FY19	967
FY20 YTD	962



### Applications Processed within 15 Days





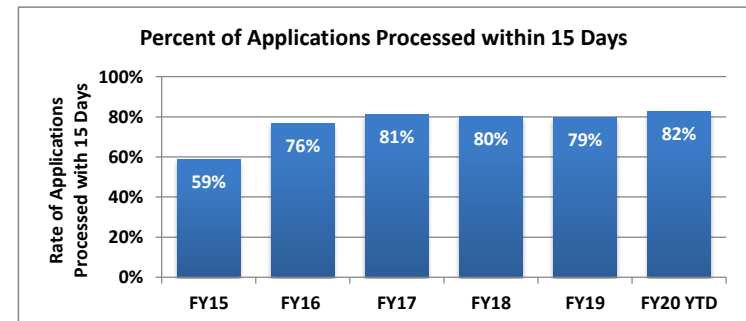
## Applications Processed Within 15 Days

Month	Applications Processed within 5 Days	Percent of Applications Processed within 5 Days	Applications Processed in 6 - 10 Days	Percent of Applications Processed in 6 - 10 Days	Applications Processed in 11 - 15 Days	Percent of Applications Processed in 11 - 15 Days	Applications Processed within 15 Days	Total Applications Processed	Percent of Applications Processed within 15 Days
Jul-18	12,174	65%	2,019	11%	1,558	8%	15,751	18,619	85%
Aug-18	13,040	63%	2,303	11%	1,667	8%	17,010	20,634	82%
Sep-18	10,360	60%	2,115	12%	1,284	8%	13,759	17,158	80%
Oct-18	12,842	66%	2,030	10%	1,731	9%	16,603	19,615	85%
Nov-18	11,928	58%	2,932	14%	2,023	10%	16,883	20,445	83%
Dec-18	10,370	48%	3,691	17%	2,078	10%	16,139	21,742	74%
Jan-19	10,412	45%	2,219	10%	1,801	8%	14,432	23,296	62%
Feb-19	10,948	59%	1,850	10%	1,419	8%	14,217	18,480	77%
Mar-19	12,767	64%	2,337	12%	1,529	8%	16,633	19,979	83%
Apr-19	12,319	60%	2,914	14%	1,735	8%	16,968	20,629	82%
May-19	11,575	56%	2,994	15%	1,888	9%	16,457	20,551	80%
Jun-19	11,110	58%	2,699	14%	1,428	7%	15,237	19,049	80%
Jul-19	13,145	62%	2,467	12%	1,822	9%	17,434	21,152	82%
Aug-19									
Sep-19									
Oct-19									
Nov-19									
Dec-19									
Jan-20									
Feb-20									
Mar-20									
Apr-20									
May-20									
Jun-20									

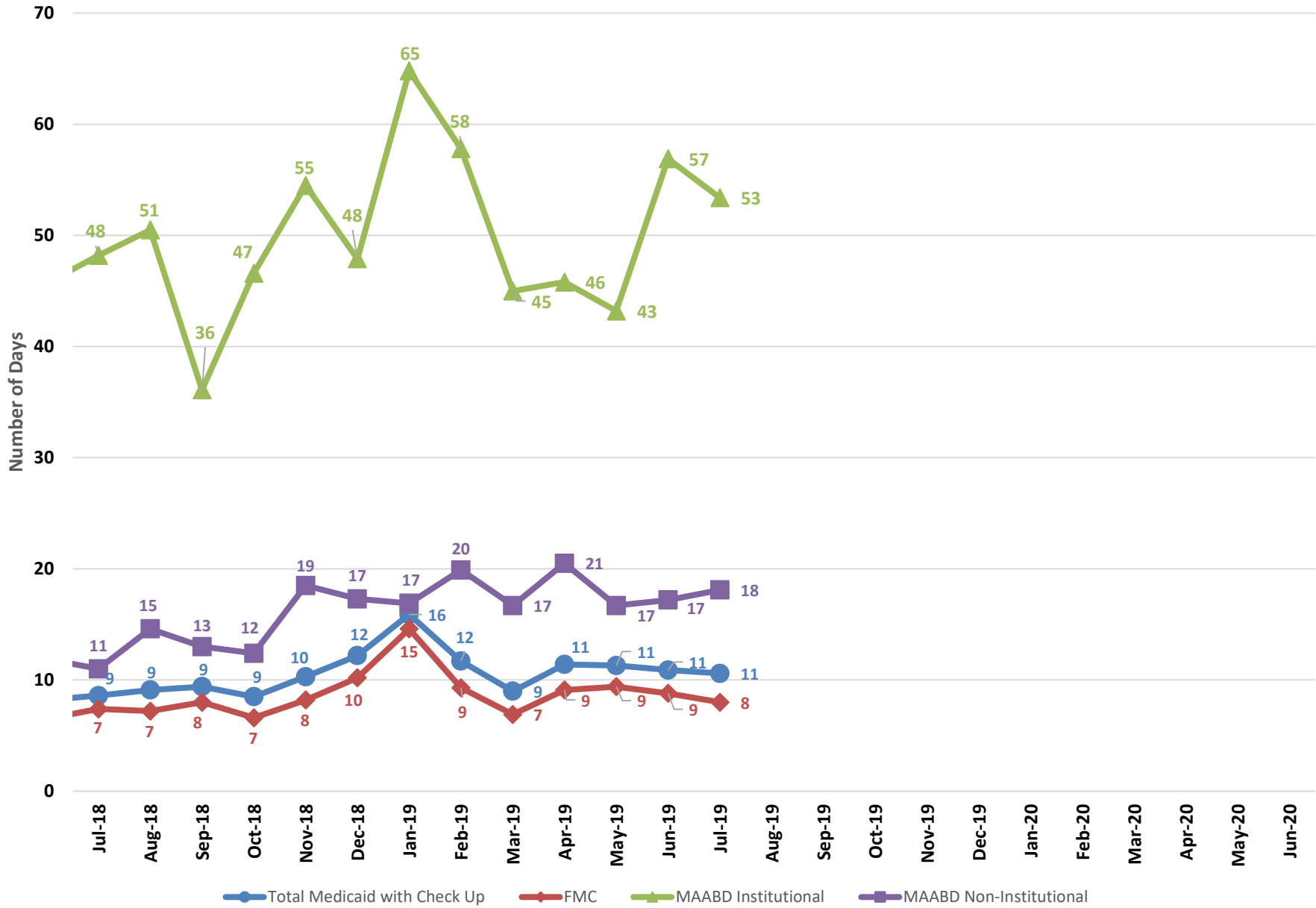
*Note: This data reflects Family Medical (FMC), Newly Eligible Adults, Aged, Blind and Disabled (MAABD), and Nevada Check Up applications.*

**Percent of Applications Processed within 15 Days - Fiscal Year Averages**

Fiscal Year	% within 15 Days
FY15	59%
FY16	76%
FY17	81%
FY18	80%
FY19	79%
FY20 YTD	82%



### Average Processing Time (Days)

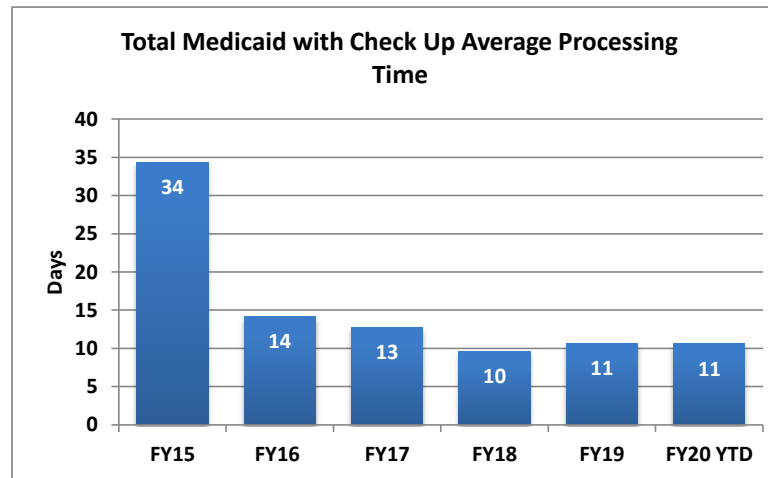


## Average Processing Times (Days)

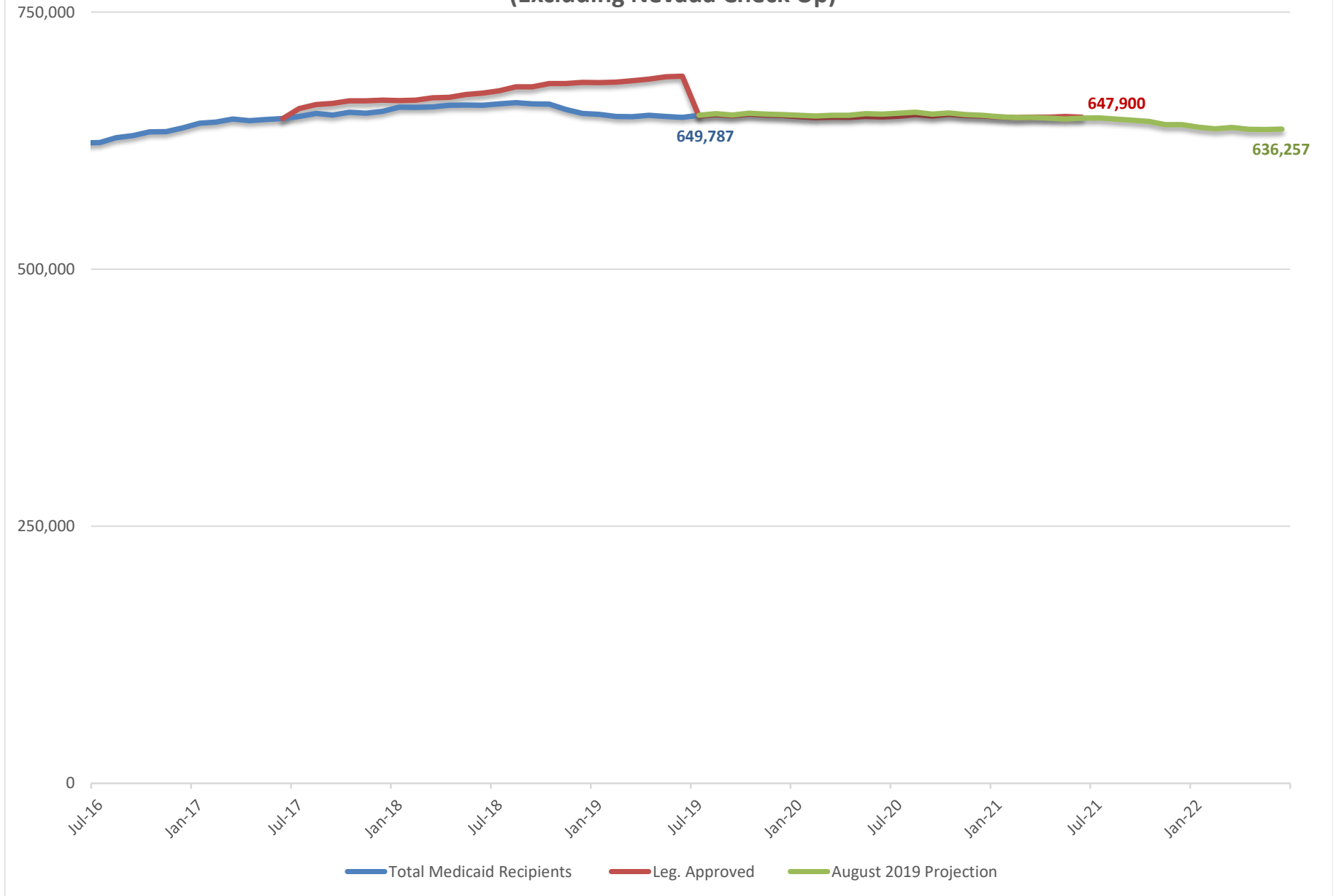
Month	Total Medicaid with Check Up	FMC	MAABD Institutional	MAABD Non-Institutional
Jul-18	9	7	48	11
Aug-18	9	7	51	15
Sep-18	9	8	36	13
Oct-18	9	7	47	12
Nov-18	10	8	55	19
Dec-18	12	10	48	17
Jan-19	16	15	65	17
Feb-19	12	9	58	20
Mar-19	9	7	45	17
Apr-19	11	9	46	21
May-19	11	9	43	17
Jun-19	11	9	57	17
Jul-19	11	8	53	18
Aug-19				
Sep-19				
Oct-19				
Nov-19				
Dec-19				
Jan-20				
Feb-20				
Mar-20				
Apr-20				
May-20				
Jun-20				

### Fiscal Year Averages

Fiscal Year	Total Medicaid with Check Up	FMC	MAABD Institutional	MAABD Non-Institutional
FY15	34	22	69	45
FY16	14	10	63	30
FY17	13	12	51	14
FY18	10	8	44	13
FY19	11	9	50	16
FY20 YTD	11	8	53	18



### Total Medicaid Recipients (Excluding Nevada Check Up)



**Total Medicaid Recipients  
(Excluding Nevada Check Up)**

**FY17 & FY18 Biennium**

Month	Total Medicaid Recipients
Jul-16	623,002
Aug-16	627,802
Sep-16	629,956
Oct-16	633,535
Nov-16	634,037
Dec-16	608,812
Jan-17	614,216
Feb-17	620,541
Mar-17	623,109
Apr-17	621,250
May-17	622,259
Jun-17	622,986
Jul-17	648,513
Aug-17	651,526
Sep-17	650,002
Oct-17	652,613
Nov-17	651,756
Dec-17	653,456
Jan-18	657,620
Feb-18	657,515
Mar-18	657,751
Apr-18	659,505
May-18	659,677
Jun-18	659,387

**FY19 & FY20 Biennium**

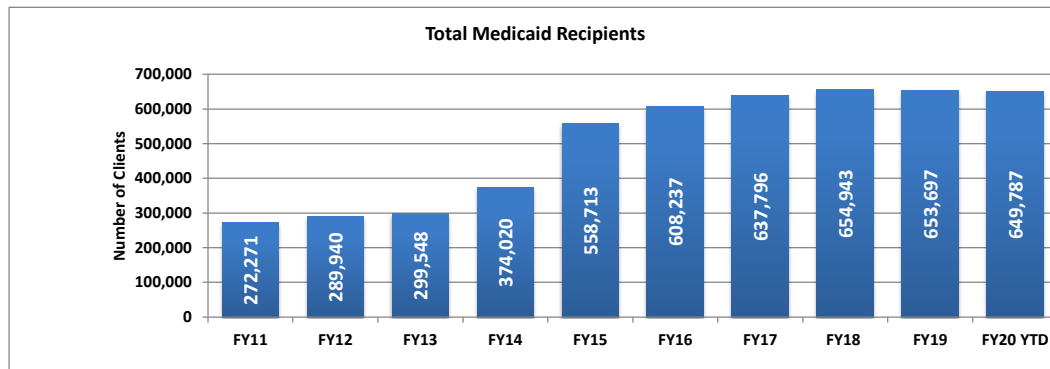
Month	Total Medicaid Recipients	Leg. Approved	August 2019 Projection
Jul-18	660,791	673,606	
Aug-18	661,988	677,370	
Sep-18	660,881	677,385	
Oct-18	660,477	680,535	
Nov-18	655,369	680,603	
Dec-18	651,512	681,627	
Jan-19	650,494	681,422	
Feb-19	648,640	681,965	
Mar-19	648,272	683,378	
Apr-19	649,630	684,779	
May-19	648,627	687,226	
Jun-19	647,680	687,731	
Jul-19	649,787	649,001	649,787
Aug-19		650,460	651,271
Sep-19		649,139	649,933
Oct-19		650,904	651,816
Nov-19		649,848	650,767
Dec-19		649,352	650,467
Jan-20		648,310	649,625
Feb-20		647,482	649,037
Mar-20		647,860	649,748
Apr-20		647,758	649,737
May-20		648,643	651,210
Jun-20		648,137	650,891

**FY21 & FY22 Biennium**

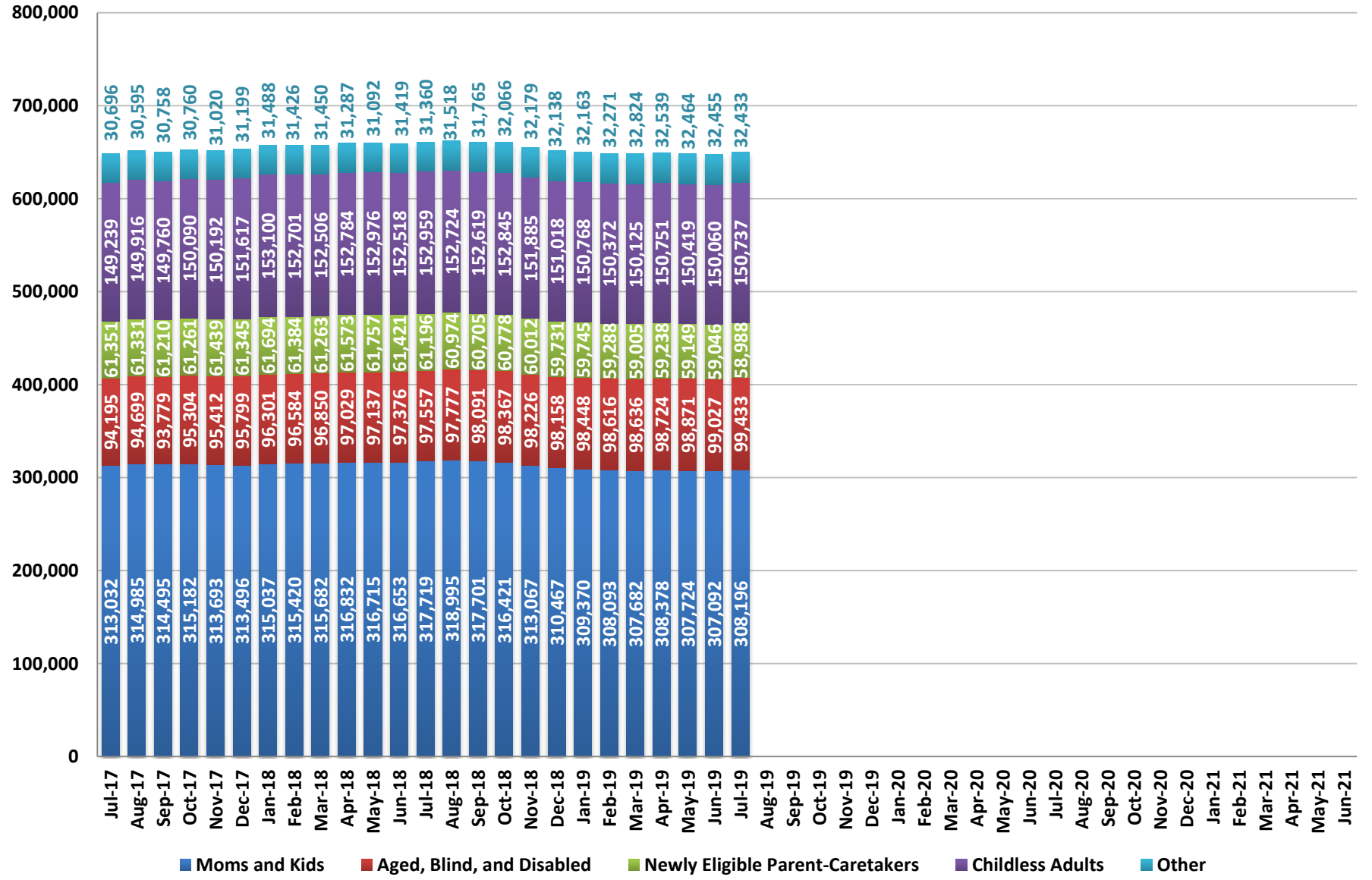
Month	Leg. Approved	August 2019 Projection
Jul-20	648,749	651,744
Aug-20	650,323	652,677
Sep-20	649,076	650,901
Oct-20	650,607	652,023
Nov-20	649,373	650,311
Dec-20	649,011	649,583
Jan-21	648,180	648,374
Feb-21	647,490	647,410
Mar-21	647,933	647,549
Apr-21	647,762	647,035
May-21	648,500	645,970
Jun-21	647,900	646,881
Jul-21		647,217
Aug-21		646,000
Sep-21		644,952
Oct-21		643,682
Nov-21		640,640
Dec-21		640,522
Jan-22		638,145
Feb-22		636,477
Mar-22		637,792
Apr-22		636,036
May-22		635,825
Jun-22		636,257

**Fiscal Year Averages**

Fiscal Year	Total Medicaid Recipients	Percent Change
FY11	272,271	17.4%
FY12	289,940	6.5%
FY13	299,548	3.3%
FY14	374,020	24.9%
FY15	558,713	49.4%
FY16	608,237	8.9%
FY17	637,796	4.9%
FY18	654,943	2.7%
FY19	653,697	-0.2%
FY20 YTD	649,787	-0.6%



## Medicaid Caseloads by Category (Excluding Nevada Check Up)



## Medicaid Caseloads (Excluding Nevada Check Up)

**Caseload by Month**

Month	Moms and Kids	Aged, Blind, and Disabled	Newly Eligible Parent-Caretakers	Childless Adults	Other	Total
Jul-17	313,032	94,195	61,351	149,239	30,696	648,513
Aug-17	314,985	94,699	61,331	149,916	30,595	651,526
Sep-17	314,495	93,779	61,210	149,760	30,758	650,002
Oct-17	315,182	95,304	61,261	150,090	30,760	652,597
Nov-17	313,693	95,412	61,439	150,192	31,020	651,756
Dec-17	313,496	95,799	61,345	151,617	31,199	653,456
Jan-18	315,037	96,301	61,694	153,100	31,488	657,620
Feb-18	315,420	96,584	61,384	152,701	31,426	657,515
Mar-18	315,682	96,850	61,263	152,506	31,450	657,751
Apr-18	316,832	97,029	61,573	152,784	31,287	659,505
May-18	316,715	97,137	61,757	152,976	31,092	659,677
Jun-18	316,653	97,376	61,421	152,518	31,419	659,387
Jul-18	317,719	97,557	61,196	152,959	31,360	660,791
Aug-18	318,995	97,777	60,974	152,724	31,518	661,988
Sep-18	317,701	98,091	60,705	152,619	31,765	660,881
Oct-18	316,421	98,367	60,778	152,845	32,066	660,477
Nov-18	313,067	98,226	60,012	151,885	32,179	655,369
Dec-18	310,467	98,158	59,731	151,018	32,138	651,512
Jan-19	309,370	98,448	59,745	150,768	32,163	650,494
Feb-19	308,093	98,616	59,288	150,372	32,271	648,640
Mar-19	307,682	98,636	59,005	150,125	32,824	648,272
Apr-19	308,378	98,724	59,238	150,751	32,539	649,630
May-19	307,724	98,871	59,149	150,419	32,464	648,627
Jun-19	307,092	99,027	59,046	150,060	32,455	647,680
Jul-19	308,196	99,433	58,988	150,737	32,433	649,787
Aug-19						
Sep-19						
Oct-19						
Nov-19						
Dec-19						
Jan-20						
Feb-20						
Mar-20						
Apr-20						
May-20						
Jun-20						

**Month over Month Change in Caseload**

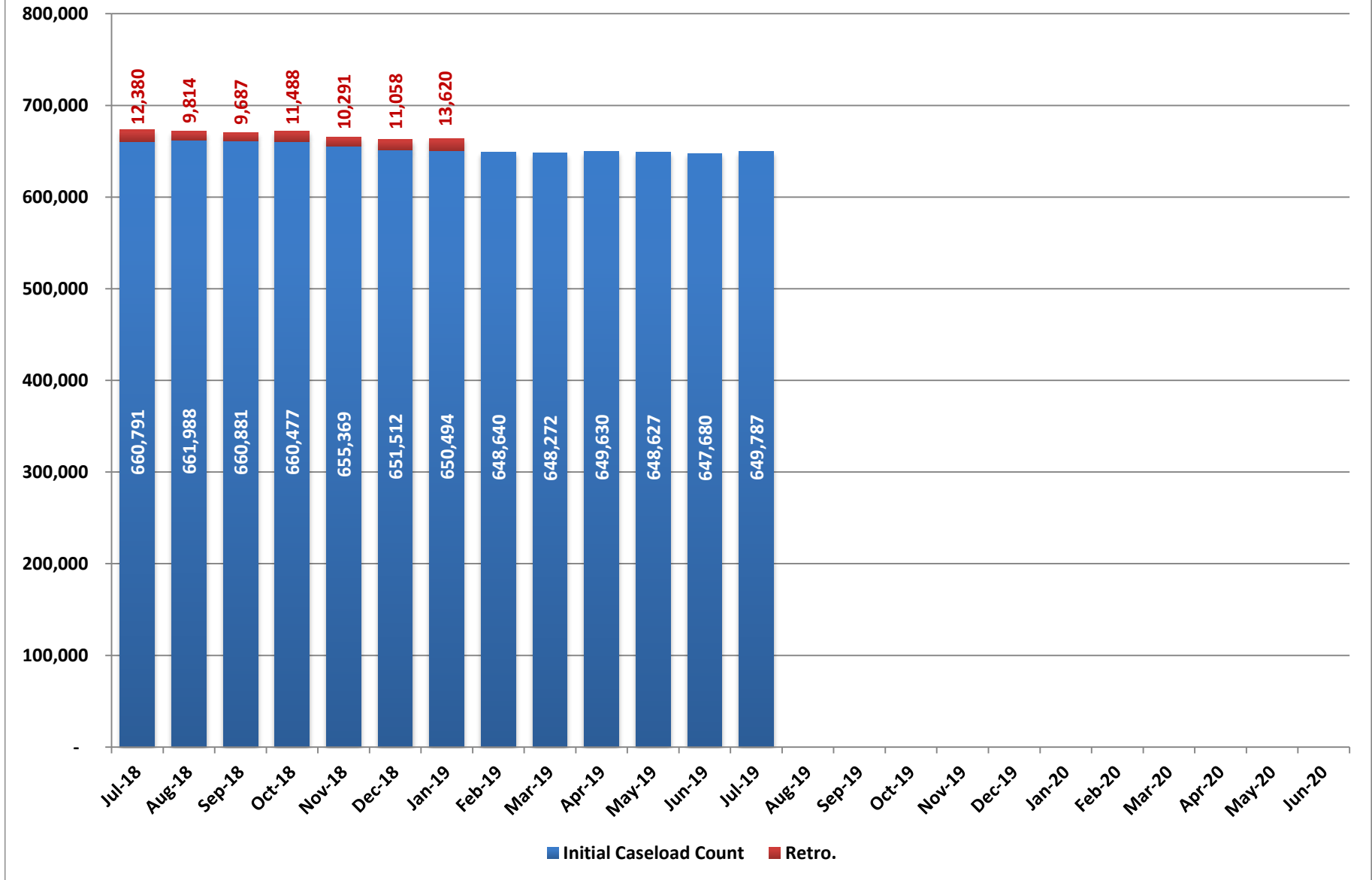
Month	Moms and Kids	Aged, Blind, and Disabled	Newly Eligible Parent-Caretakers	Childless Adults	Other	Total
Jul-17	1,444	449	(31)	139	48	2,049
Aug-17	1,953	504	(20)	677	(101)	3,013
Sep-17	(490)	(920)	(121)	(156)	163	(1,524)
Oct-17	687	1,525	51	330	2	2,595
Nov-17	(1,489)	108	178	102	260	(841)
Dec-17	(197)	387	(94)	1,425	179	1,700
Jan-18	1,541	502	349	1,483	289	4,164
Feb-18	383	283	(310)	(399)	(62)	(105)
Mar-18	262	266	(121)	(195)	24	236
Apr-18	1,150	179	310	278	(163)	1,754
May-18	(117)	108	184	192	(195)	172
Jun-18	(62)	239	(336)	(458)	327	(290)
Jul-18	1,066	181	(225)	441	(59)	1,404
Aug-18	1,276	220	(222)	(235)	158	1,197
Sep-18	(1,294)	314	(269)	(105)	247	(1,107)
Oct-18	(1,280)	276	73	226	301	(404)
Nov-18	(3,354)	(141)	(766)	(960)	113	(5,108)
Dec-18	(2,600)	(68)	(281)	(867)	(41)	(3,857)
Jan-19	(1,097)	290	14	(250)	25	(1,018)
Feb-19	(1,277)	168	(457)	(396)	108	(1,854)
Mar-19	(411)	20	(283)	(247)	553	(368)
Apr-19	696	88	233	626	(285)	1,358
May-19	(654)	147	(89)	(332)	(75)	(1,003)
Jun-19	(632)	156	(103)	(359)	(9)	(947)
Jul-19	1,104	406	(58)	677	(22)	2,107
Aug-19						
Sep-19						
Oct-19						
Nov-19						
Dec-19						
Jan-20						
Feb-20						
Mar-20						
Apr-20						
May-20						
Jun-20						

Note: Other includes Child Welfare, County Match, Waivers, CHIP to Medicaid, and other minor caseloads.

**Fiscal Year Average Caseload**

Fiscal Year	Moms and Kids	Aged, Blind, and Disabled	Newly Eligible Parent-Caretakers	Childless Adults	Other	Total
FY15	291,013	79,931	47,528	116,729	23,526	558,726
FY16	299,439	85,818	58,284	136,771	27,871	608,182
FY17	308,943	91,758	60,985	146,057	30,036	637,779
FY18	315,102	95,872	61,419	151,450	31,099	654,942
FY19	311,892	98,375	59,906	151,379	32,145	653,697
FY20 YTD	308,196	99,433	58,988	150,737	32,433	649,787

## Total Medicaid - Initial and Retroactive Caseload Counts (Excluding Nevada Check Up)





**Total Medicaid - Initial and Retroactive Caseload Counts  
(Excluding Nevada Check up)**

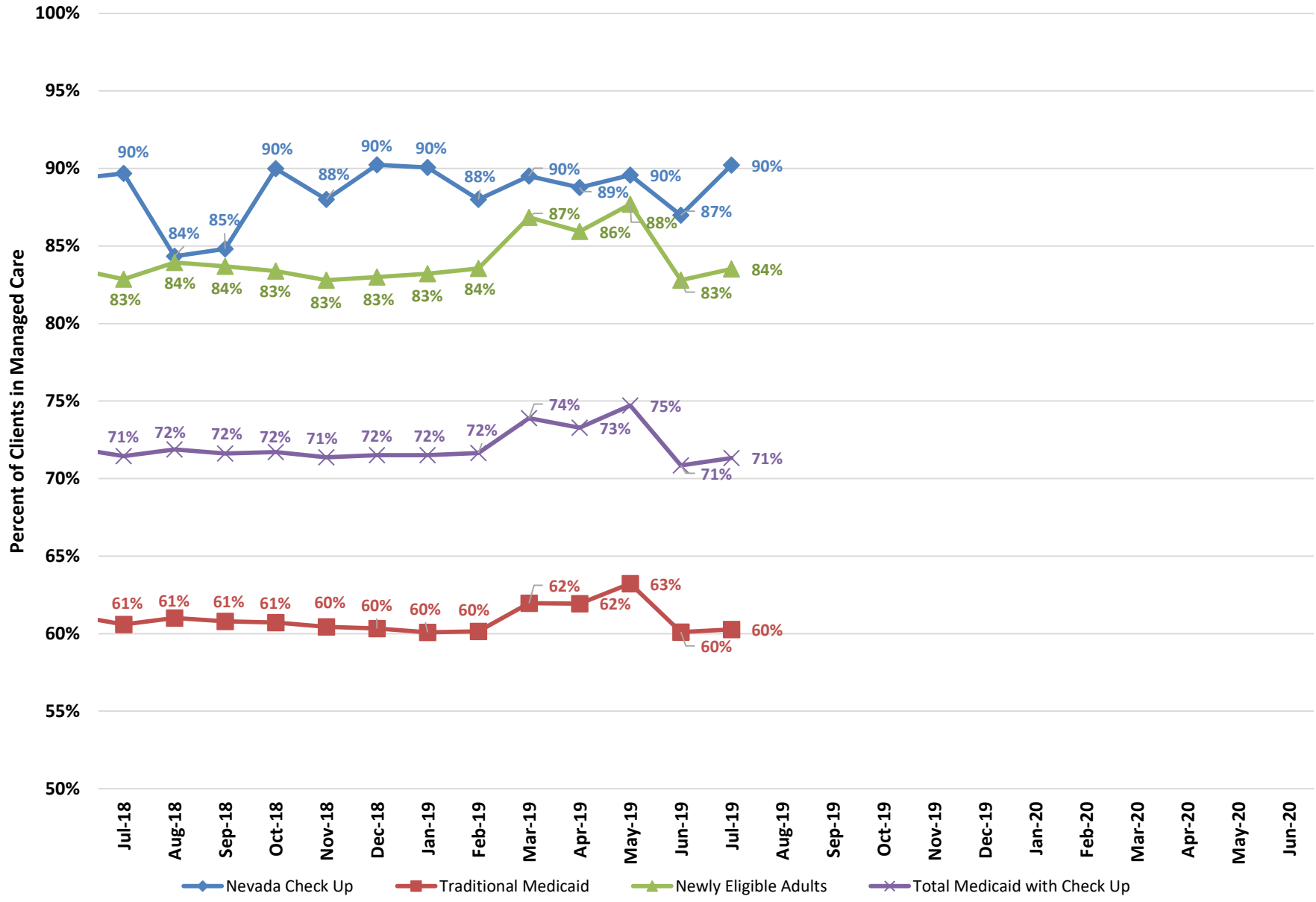
	FMC				Aged				Blind and Disabled				Total MAABD				Total Medicaid			
	Initial Caseload Count	Retro.	Caseload with Retro.	% Retro.	Initial Caseload Count	Retro.	Caseload with Retro.	% Retro	Initial Caseload Count	Retro.	Caseload with Retro.	% Retro	Initial Caseload Count	Retro.	Caseload with Retro.	% Retro	Initial Caseload Count	Retro.	Caseload with Retro.	% Retro
Jul-18	545,367	11,163	556,530	2.0%	13,373	114	13,487	0.8%	42,289	337	42,626	0.8%	104,109	1,060	105,169	1.0%	660,791	12,380	673,171	1.9%
Aug-18	546,202	8,742	554,944	1.6%	13,458	122	13,580	0.9%	42,318	270	42,588	0.6%	104,400	918	105,318	0.9%	661,988	9,814	671,802	1.5%
Sep-18	544,785	8,646	553,431	1.6%	13,509	96	13,605	0.7%	42,338	256	42,594	0.6%	104,719	889	105,608	0.8%	660,881	9,687	670,568	1.5%
Oct-18	543,977	10,329	554,306	1.9%	13,612	115	13,727	0.8%	42,607	301	42,908	0.7%	105,071	985	106,056	0.9%	660,477	11,488	671,965	1.7%
Nov-18	538,927	9,282	548,209	1.7%	13,618	116	13,734	0.8%	42,326	249	42,575	0.6%	104,942	848	105,790	0.8%	655,369	10,291	665,660	1.6%
Dec-18	535,062	10,217	545,279	1.9%	13,640	98	13,738	0.7%	42,108	247	42,355	0.6%	104,887	727	105,614	0.7%	651,512	11,058	662,570	1.7%
Jan-19	533,782	12,727	546,509	2.4%	13,690	72	13,762	0.5%	42,185	296	42,481	0.7%	105,151	799	105,950	0.8%	650,494	13,620	664,114	2.1%
Feb-19	531,767				13,735				42,139				105,346				648,640			
Mar-19	530,912				13,811				41,983				105,359				648,272			
Apr-19	532,249				13,892				41,859				105,461				649,630			
May-19	531,036				13,911				41,740				105,646				648,627			
Jun-19	529,914				13,979				41,660				105,822				647,680			
Jul-19	531,584				14,030				41,856				106,238				649,787			
Aug-19																				
Sep-19																				
Oct-19																				
Nov-19																				
Dec-19																				
Jan-20																				
Feb-20																				
Mar-20																				
Apr-20																				
May-20																				
Jun-20																				

**Fiscal Year Averages**

Fiscal Year	FMC				Aged				Blind and Disabled				Total MAABD				Total Medicaid			
	Initial Caseload Count	Retro.	Caseload with Retro.	% Retro.	Initial Caseload Count	Retro.	Caseload with Retro.	% Retro	Initial Caseload Count	Retro.	Caseload with Retro.	% Retro	Initial Caseload Count	Retro.	Caseload with Retro.	% Retro	Initial Caseload Count	Retro.	Caseload with Retro.	% Retro
FY15	463,507	20,609	484,116	4.5%	11,623	243	11,866	2.1%	37,622	537	38,159	1.4%	85,646	1,523	87,169	1.8%	558,774	22,319	581,092	4.0%
FY16	505,872	12,322	518,194	2.4%	12,181	173	12,355	1.4%	39,686	352	40,037	0.9%	91,761	1,159	92,920	1.3%	608,237	13,600	621,837	2.2%
FY17	529,040	11,158	540,198	2.1%	12,699	172	12,870	1.4%	41,562	329	41,891	0.8%	97,926	993	98,919	1.0%	637,798	12,258	650,056	1.9%
FY18	541,608	11,121	552,730	2.1%	13,062	163	13,225	1.2%	42,197	379	42,576	0.9%	102,281	1,223	103,504	1.2%	654,943	12,486	667,429	1.9%
FY19	536,998	10,158	551,315	1.9%	13,686	105	13,662	0.8%	42,129	279	42,590	0.7%	105,076	889	105,644	0.8%	653,697	11,191	668,550	1.7%
FY20 TYD	531,584				14,030				41,856				106,238				649,787			

Retro numbers were not updated after January 2019 due to the implementation of the new data warehouse system.

### Percent in Managed Care by Client Type

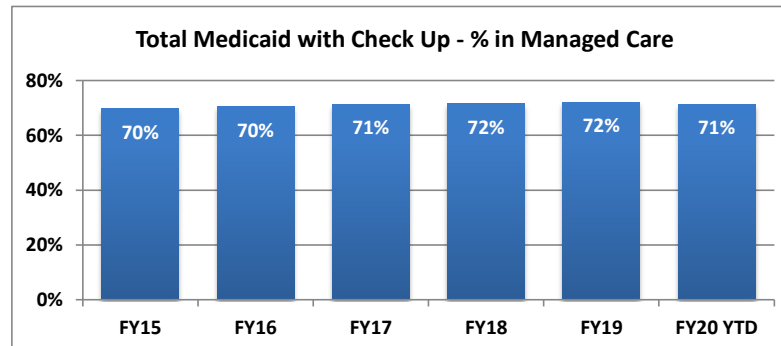


## Percent of Medicaid Clients in Managed Care

Month	Nevada Check Up			Traditional Medicaid			Newly Eligible Adults			Total Medicaid with Check Up		
	Managed Care Enrollment	Total Caseload	% in Managed Care	Managed Care Enrollment	Total Caseload net of SLMB	% in Managed Care	Managed Care Enrollment	Total Caseload	% in Managed Care	Managed Care Enrollment	Total Caseload net of SLMB	% in Managed Care
Jul-18	25,170	28,066	90%	277,091	457,264	61%	177,917	214,714	83%	480,178	671,978	71%
Aug-18	24,129	28,608	84%	280,235	459,334	61%	179,828	214,260	84%	484,192	673,594	72%
Sep-18	23,769	28,027	85%	278,434	457,989	61%	178,996	213,869	84%	481,199	671,858	72%
Oct-18	25,328	28,144	90%	277,632	457,284	61%	178,585	214,196	83%	481,545	671,480	72%
Nov-18	25,466	28,937	88%	274,842	454,758	60%	175,882	212,434	83%	476,190	667,192	71%
Dec-18	26,276	29,122	90%	272,818	452,153	60%	175,351	211,278	83%	474,445	663,431	72%
Jan-19	26,921	29,890	90%	271,637	452,063	60%	175,632	211,069	83%	474,190	663,132	72%
Feb-19	26,916	30,588	88%	271,727	451,736	60%	175,640	210,227	84%	474,283	661,963	72%
Mar-19	26,721	29,854	90%	279,501	451,066	62%	182,154	209,747	87%	488,376	660,813	74%
Apr-19	24,278	27,350	89%	278,102	449,054	62%	180,985	210,608	86%	483,365	659,662	73%
May-19	24,110	26,917	90%	283,220	447,922	63%	184,306	210,158	88%	491,636	658,080	75%
Jun-19	22,986	26,425	87%	268,582	446,861	60%	173,632	209,695	83%	465,200	656,556	71%
Jul-19	23,927	26,523	90%	270,215	448,323	60%	175,715	210,386	84%	469,857	658,709	71%
Aug-19												
Sep-19												
Oct-19												
Nov-19												
Dec-19												
Jan-20												
Feb-20												
Mar-20												
Apr-20												
May-20												
Jun-20												

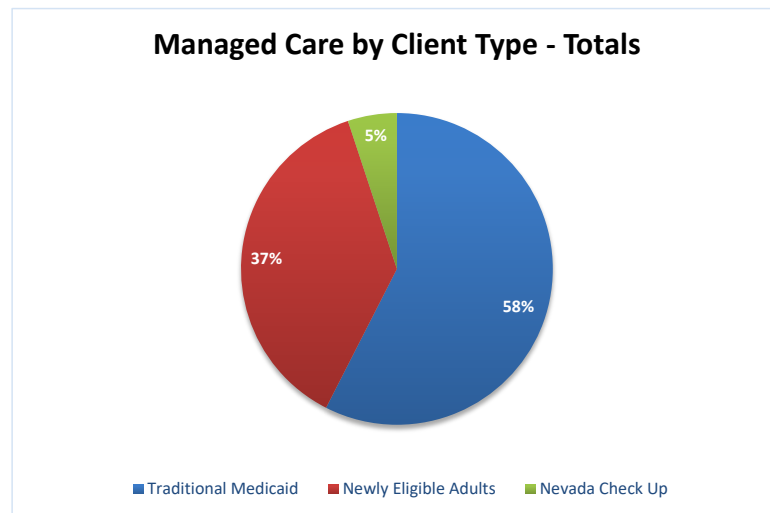
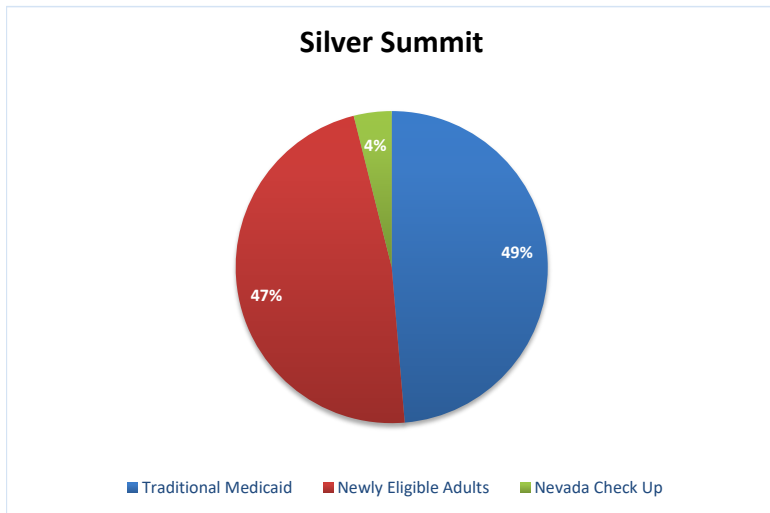
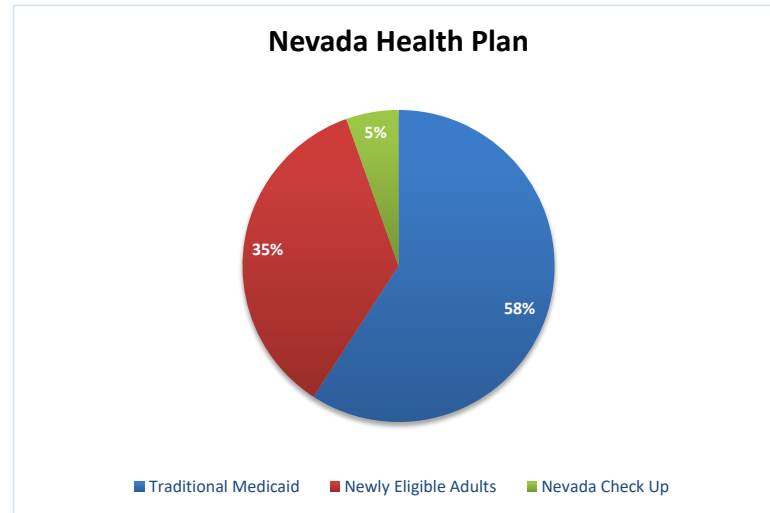
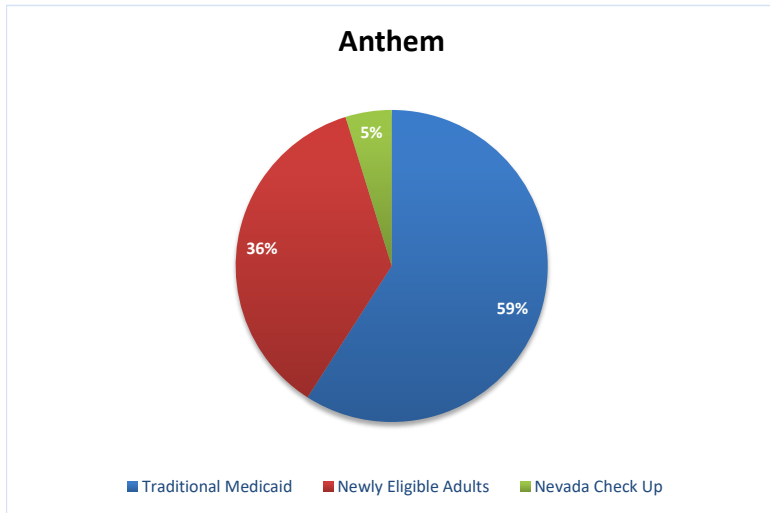
### Fiscal Year Averages

	Managed Care Enrollment	% in Managed Care
<b>FY15</b>	395,743	70%
<b>FY16</b>	437,740	70%
<b>FY17</b>	462,312	71%
<b>FY18</b>	476,750	72%
<b>FY19</b>	479,567	72%
<b>FY20 YTD</b>	469,857	71%



Note: Traditional Medicaid totals include both cat 11 (CHIP Expansion), and cat 12 (TANF/CHAP) populations.

# Managed Care by Client Type Fiscal Year 2020 YTD



# Managed Care Providers

Month	Anthem								Health Plan of Nevada								Total Managed Care Enrollment
	Traditional Medicaid	% of Traditional Medicaid	Newly Eligible Adults	% of Newly Eligible	Nevada Check Up	% of Nevada Check Up	Total for Plan	% of Total	Traditional Medicaid	% of Traditional Medicaid	Newly Eligible Adults	% of Newly Eligible	Nevada Check Up	% of Nevada Check Up	Total for Plan	% of Total	
Jul-18	106,130	38%	59,233	33%	8,784	35%	174,147	36%	146,720	53%	93,425	53%	14,373	57%	254,518	53%	480,178
Aug-18	107,663	38%	60,459	34%	8,409	35%	176,531	36%	147,917	53%	94,012	52%	13,794	57%	255,723	53%	484,192
Sep-18	107,725	39%	60,882	34%	8,360	35%	176,967	37%	146,575	53%	93,260	52%	13,546	57%	253,381	53%	481,199
Oct-18	108,023	39%	61,760	35%	9,043	36%	178,826	37%	145,598	52%	92,311	52%	14,331	57%	252,240	52%	481,545
Nov-18	107,498	39%	61,741	35%	9,134	36%	178,373	37%	143,556	52%	90,558	51%	14,425	57%	248,539	52%	476,190
Dec-18	107,138	39%	62,435	36%	9,508	36%	179,081	38%	142,095	52%	89,703	51%	14,737	56%	246,535	52%	474,445
Jan-19	107,035	39%	63,162	36%	9,862	37%	180,059	38%	141,071	52%	89,099	51%	14,924	55%	245,094	52%	474,190
Feb-19	107,049	39%	63,164	36%	9,861	37%	180,074	38%	141,145	52%	89,105	51%	14,920	55%	245,170	52%	474,283
Mar-19	110,744	40%	66,387	36%	9,785	37%	186,916	38%	144,117	52%	91,227	50%	14,742	55%	250,086	51%	488,376
Apr-19	110,644	40%	66,467	37%	8,817	36%	185,928	38%	143,253	52%	90,444	50%	13,503	56%	247,200	51%	483,365
May-19	113,139	40%	68,507	37%	8,792	36%	190,438	39%	144,981	51%	91,153	49%	13,416	56%	249,550	51%	491,636
Jun-19	107,694	40%	65,241	38%	8,507	37%	181,442	39%	137,479	51%	85,541	49%	12,636	55%	235,656	51%	465,200
Jul-19	108,592	40%	66,446	38%	8,800	37%	183,838	39%	137,841	51%	86,106	49%	13,210	55%	237,157	50%	469,857
Aug-19																	
Sep-19																	
Oct-19																	
Nov-19																	
Dec-19																	
Jan-20																	
Feb-20																	
Mar-20																	
Apr-20																	
May-20																	
Jun-20																	

Note: Traditional Medicaid totals include both cat 11 (CHIP Expansion), and cat 12 (TANF/CHAP) populations.

## Fiscal Year Averages

Fiscal Year	Anthem								Health Plan of Nevada							
	Traditional Medicaid	% of Traditional Medicaid	Newly Eligible Adults	% of Newly Eligible	Nevada Check Up	% of Nevada Check Up	Total for Plan	% of Total	Traditional Medicaid	% of Traditional Medicaid	Newly Eligible Adults	% of Newly Eligible	Nevada Check Up	% of Nevada Check Up	Total for Plan	% of Total
FY15	112,119	44%	63,560	40%	7,655	39%	183,334	42%	143,176	56%	95,741	60%	12,020	61%	250,936	58%
FY16	114,584	44%	65,662	40%	8,222	39%	188,468	42%	148,317	56%	100,569	60%	13,030	61%	261,916	58%
FY17	115,016	43%	67,149	39%	8,638	38%	190,802	41%	151,854	57%	104,861	61%	13,940	62%	270,655	59%
FY18	108,089	40%	61,345	35%	8,520	36%	177,954	38%	151,193	55%	100,426	57%	14,152	59%	265,770	56%
FY19	108,374	39%	63,287	35%	9,072	36%	180,732	38%	143,709	52%	90,820	51%	14,112	56%	248,641	52%
FY20 YTD	108,592	40%	66,446	38%	8,800	37%	183,838	39%	137,841	51%	86,106	49%	13,210	55%	237,157	50%

## Managed Care Providers (Continued)

Month	Silver Summit								Aetna								Total Managed Care Enrollment
	Traditional Medicaid	% of Traditional Medicaid	Newly Eligible Adults	% of Newly Eligible	Nevada Check Up	% of Nevada Check Up	Total for Plan	% of Total	Traditional Medicaid	% of Traditional Medicaid	Newly Eligible Adults	% of Newly Eligible	Nevada Check Up	% of Nevada Check Up	Total for Plan	% of Total	
Jul-18	24,241	9.0%	25,259	14.0%	2,013	8.0%	51,513	11.0%									480,178
Aug-18	24,655	8.8%	25,357	14.1%	1,926	8.0%	51,938	10.7%									484,192
Sep-18	24,134	8.7%	24,854	13.9%	1,863	7.8%	50,851	10.6%									481,199
Oct-18	24,011	8.6%	24,514	13.7%	1,954	7.7%	50,479	10.5%									481,545
Nov-18	23,788	8.7%	23,583	13.4%	1,907	7.5%	49,278	10.3%									476,190
Dec-18	23,585	8.6%	23,213	13.2%	2,031	7.7%	48,829	10.3%									474,445
Jan-19	23,531	9.0%	23,371	13.0%	2,135	8.0%	49,037	10.0%									474,190
Feb-19	23,533	8.7%	23,371	13.3%	2,135	7.9%	49,039	10.3%									474,283
Mar-19	24,640	8.8%	24,540	13.5%	2,194	8.2%	51,374	10.5%									488,376
Apr-19	24,205	8.7%	24,074	13.3%	1,958	8.1%	50,237	10.4%									483,365
May-19	25,100	8.9%	24,646	13.4%	1,902	7.9%	51,648	10.5%									491,636
Jun-19	23,409	8.7%	22,850	13.2%	1,843	8.0%	48,102	10.3%									465,200
Jul-19	23,782	8.8%	23,163	13.2%	1,917	8.0%	48,862	10.4%									469,857
Aug-19																	
Sep-19																	
Oct-19																	
Nov-19																	
Dec-19																	
Jan-20																	
Feb-20																	
Mar-20																	
Apr-20																	
May-20																	
Jun-20																	

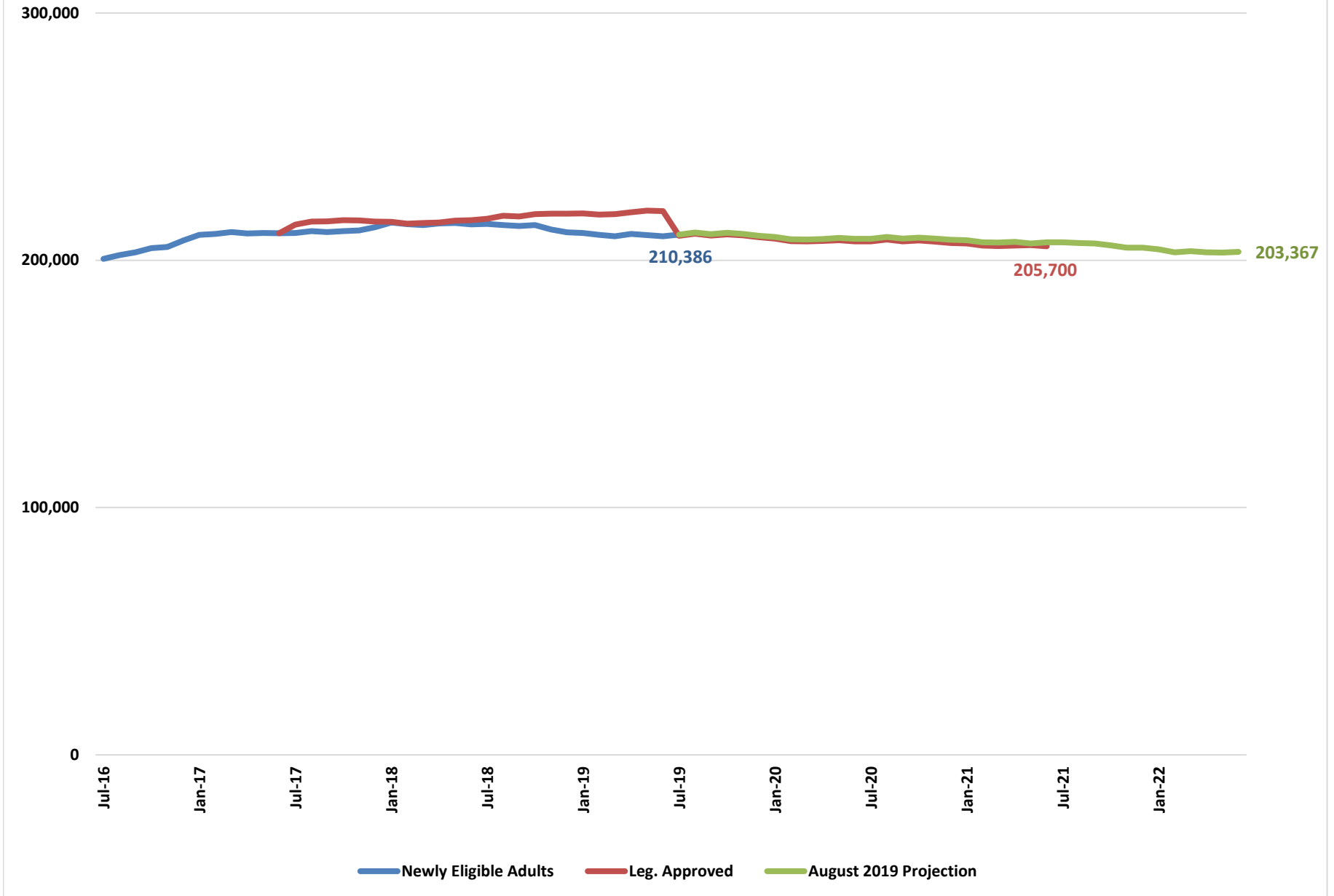
Note: Traditional Medicaid totals include both cat 11 (CHIP Expansion), and cat 12 (TANF/CHAP) populations.

### Fiscal Year Averages

Fiscal Year	Silver Summit								Aetna							
	Traditional Medicaid	% of Traditional Medicaid	Newly Eligible Adults	% of Newly Eligible	Nevada Check Up	% of Nevada Check Up	Total for Plan	% of Total	Traditional Medicaid	% of Traditional Medicaid	Newly Eligible Adults	% of Newly Eligible	Nevada Check Up	% of Nevada Check Up	Total for Plan	% of Total
FY15																
FY16																
FY17																
FY18	15,493	5.0%	15,970	8.0%	1,351	5.0%	32,814	6.1%	1,210	0.4%	1,238	0.7%	90	0.4%	2,538	0.5%
FY19	24,069	8.8%	24,136	13.5%	1,988	7.9%	50,194	10.5%	0	-	0	-	0	-	0	-
FY20 YTD	23,782	8.8%	23,163	13.2%	1,917	8.0%	48,862	10.4%	0	-	0	-	0	-	0	-

Note: Aetna Better Health only participated in the Managed Care program for two months. Their caseloads for the two months are included in Totals

# Newly Eligible Adults



# Newly Eligible Adults

**FY17 & FY18 Biennium**

Month	Newly Eligible Adults
Jul-16	200,583
Aug-16	202,122
Sep-16	203,163
Oct-16	204,878
Nov-16	205,406
Dec-16	207,966
Jan-17	210,296
Feb-17	210,670
Mar-17	211,414
Apr-17	210,861
May-17	211,053
Jun-17	210,960
Jul-17	211,060
Aug-17	211,736
Sep-17	211,428
Oct-17	211,805
Nov-17	212,028
Dec-17	213,384
Jan-18	215,236
Feb-18	214,570
Mar-18	214,266
Apr-18	214,869
May-18	215,101
Jun-18	214,489

**FY19 & FY20 Biennium**

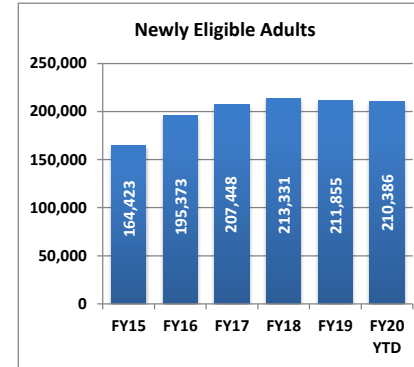
Month	Newly Eligible Adults	Leg. Approved	August 2019 Projection
Jul-18	214,714	216,778	
Aug-18	214,260	218,009	
Sep-18	213,869	217,673	
Oct-18	214,196	218,687	
Nov-18	212,434	218,810	
Dec-18	211,278	218,802	
Jan-19	211,069	218,980	
Feb-19	210,227	218,499	
Mar-19	209,747	218,614	
Apr-19	210,608	219,372	
May-19	210,158	220,076	
Jun-19	209,695	219,885	
Jul-19	210,386	209,869	210,386
Aug-19		210,709	211,249
Sep-19		210,017	210,583
Oct-19		210,507	211,110
Nov-19		210,050	210,642
Dec-19		209,299	209,927
Jan-20		208,725	209,412
Feb-20		207,744	208,443
Mar-20		207,613	208,348
Apr-20		207,836	208,579
May-20		208,067	209,042
Jun-20		207,641	208,650

**FY21 & FY22 Biennium**

Month	Leg. Approved	August 2019 Projection
Jul-20	207,625	208,657
Aug-20	208,343	209,389
Sep-20	207,680	208,770
Oct-20	208,023	209,167
Nov-20	207,527	208,775
Dec-20	207,004	208,291
Jan-21	206,768	208,062
Feb-21	205,916	207,283
Mar-21	205,776	207,159
Apr-21	205,986	207,404
May-21	206,146	206,747
Jun-21	205,700	207,261
Jul-21		207,227
Aug-21		206,942
Sep-21		206,819
Oct-21		206,042
Nov-21		205,116
Dec-21		205,122
Jan-22		204,442
Feb-22		203,176
Mar-22		203,643
Apr-22		203,238
May-22		203,115
Jun-22		203,367

**Fiscal Year Averages**

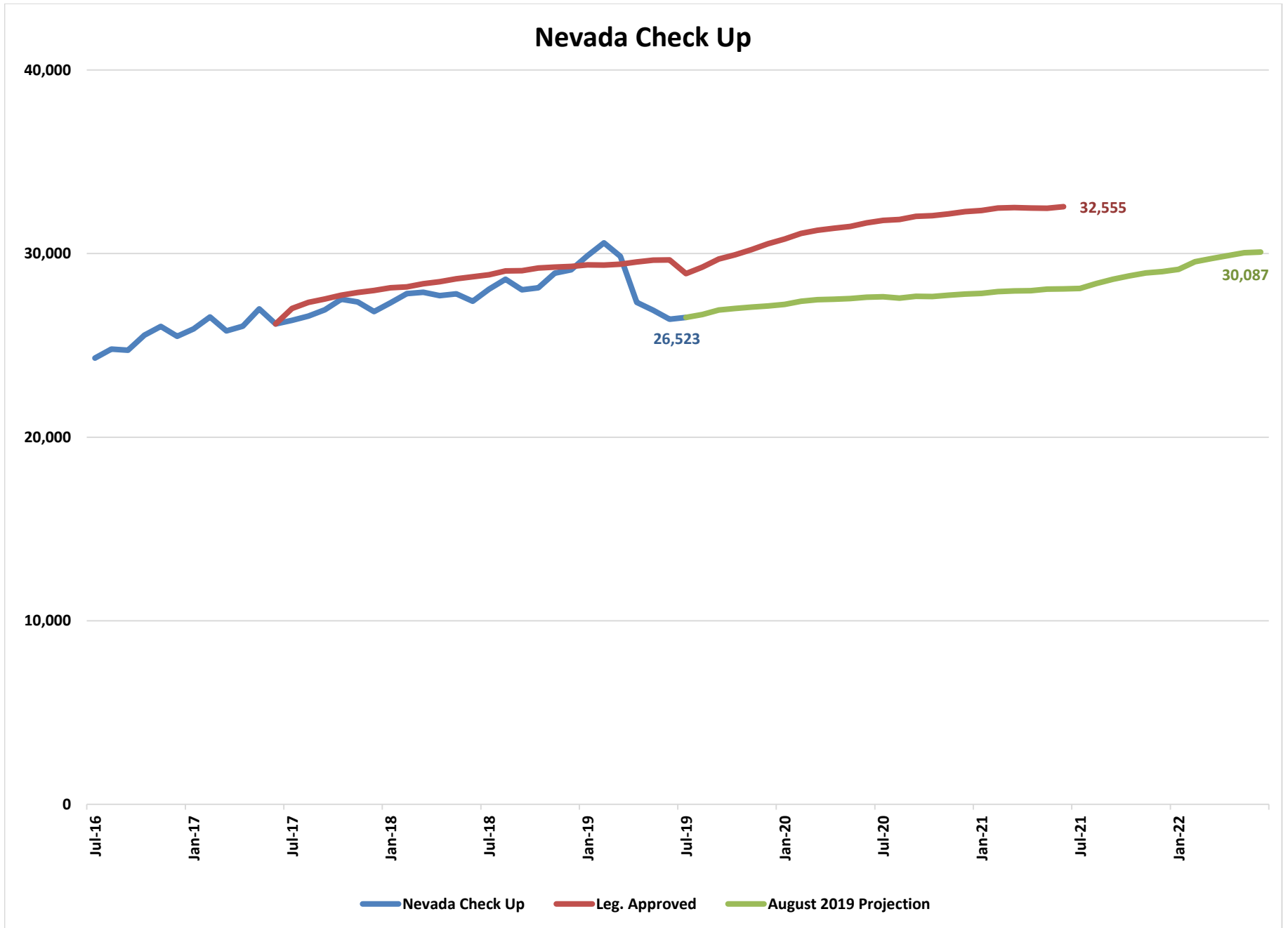
Fiscal Year	Newly Eligible Adults	Percent Change
<b>FY15</b>	164,423	
<b>FY16</b>	195,373	18.8%
<b>FY17</b>	207,448	6.2%
<b>FY18</b>	213,331	2.8%
<b>FY19</b>	211,855	-0.7%
<b>FY20 YTD</b>	210,386	-0.7%



**Note:** This caseload includes childless adults age 19-64 between 0%-138% FPL and parents age 19-64 between 23%-138% FPL.



# Nevada Check Up



# Nevada Check Up

**FY16 & FY17 Biennium**

Month	Nevada Check Up
Jul-16	24,315
Aug-16	24,801
Sep-16	24,741
Oct-16	25,558
Nov-16	26,036
Dec-16	25,492
Jan-17	25,896
Feb-17	26,551
Mar-17	25,795
Apr-17	26,050
May-17	26,989
Jun-17	26,165
Jul-17	26,369
Aug-17	26,604
Sep-17	26,935
Oct-17	27,515
Nov-17	27,372
Dec-17	26,842
Jan-18	27,314
Feb-18	27,825
Mar-18	27,893
Apr-18	27,713
May-18	27,813
Jun-18	27,406

**FY19 & FY20 Biennium**

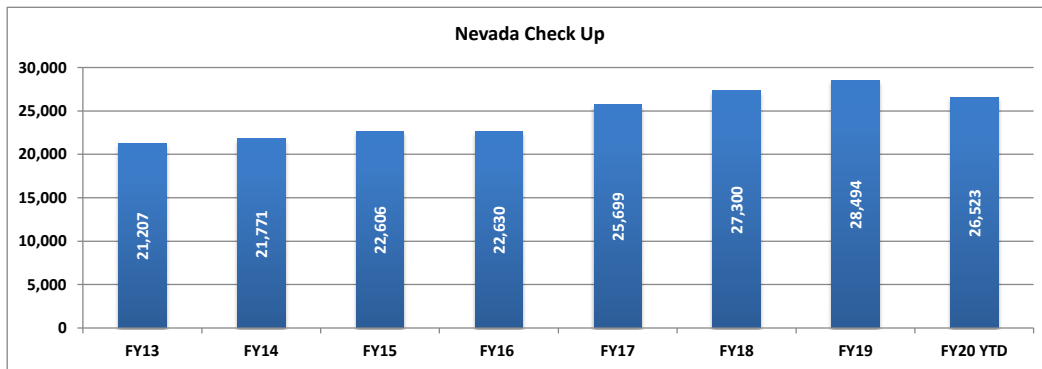
Month	Nevada Check Up	Leg. Approved	August 2019 Projection
Jul-18	28,066	28,848	
Aug-18	28,608	29,054	
Sep-18	28,027	29,076	
Oct-18	28,144	29,215	
Nov-18	28,937	29,268	
Dec-18	29,122	29,306	
Jan-19	29,890	29,387	
Feb-19	30,588	29,370	
Mar-19	29,854	29,431	
Apr-19	27,350	29,545	
May-19	26,917	29,648	
Jun-19	26,425	29,661	
Jul-19	26,523	28,907	26,523
Aug-19		29,266	26,684
Sep-19		29,707	26,926
Oct-19		29,941	27,017
Nov-19		30,220	27,086
Dec-19		30,537	27,152
Jan-20		30,793	27,234
Feb-20		31,101	27,400
Mar-20		31,277	27,488
Apr-20		31,379	27,518
May-20		31,484	27,551
Jun-20		31,670	27,630

**FY21 & FY22 Biennium**

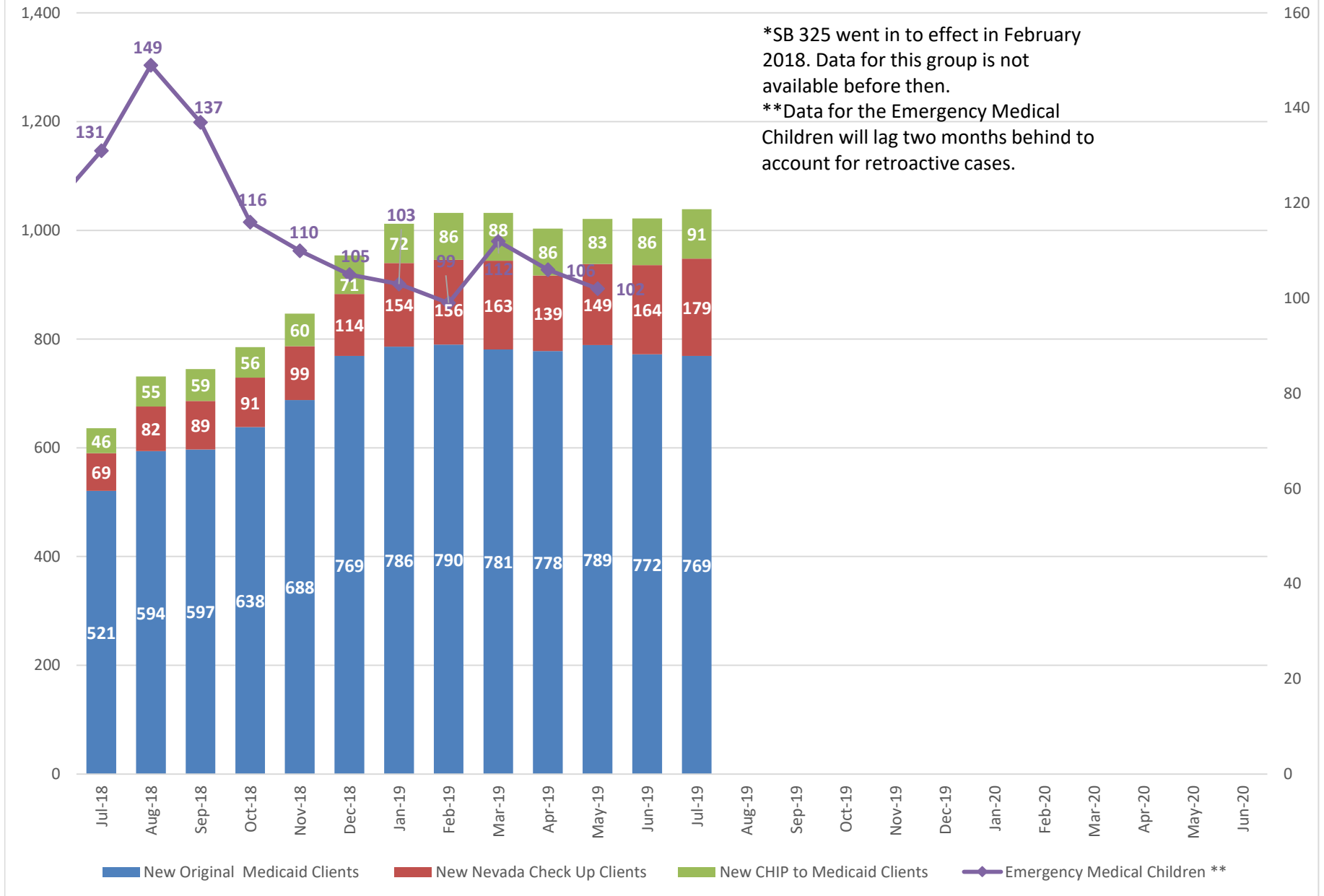
Month	Leg. Approved	August 2019 Projection
Jul-20	31,808	27,649
Aug-20	31,857	27,576
Sep-20	32,027	27,677
Oct-20	32,063	27,660
Nov-20	32,164	27,732
Dec-20	32,284	27,802
Jan-21	32,352	27,830
Feb-21	32,478	27,930
Mar-21	32,506	27,970
Apr-21	32,484	27,977
May-21	32,473	28,068
Jun-21	32,555	28,079
Jul-21		28,100
Aug-21		28,373
Sep-21		28,602
Oct-21		28,792
Nov-21		28,953
Dec-21		29,020
Jan-22		29,147
Feb-22		29,562
Mar-22		29,736
Apr-22		29,893
May-22		30,045
Jun-22		30,087

**Fiscal Year Averages**

Fiscal Year	Nevada Check Up	Percent Change
FY13	21,207	
FY14	21,771	2.7%
FY15	22,606	3.8%
FY16	22,630	0.1%
FY17	25,699	13.6%
FY18	27,300	6.2%
FY19	28,494	4.4%
FY20 YTD	26,523	-6.9%



## New Clients Added Under SB 325\*

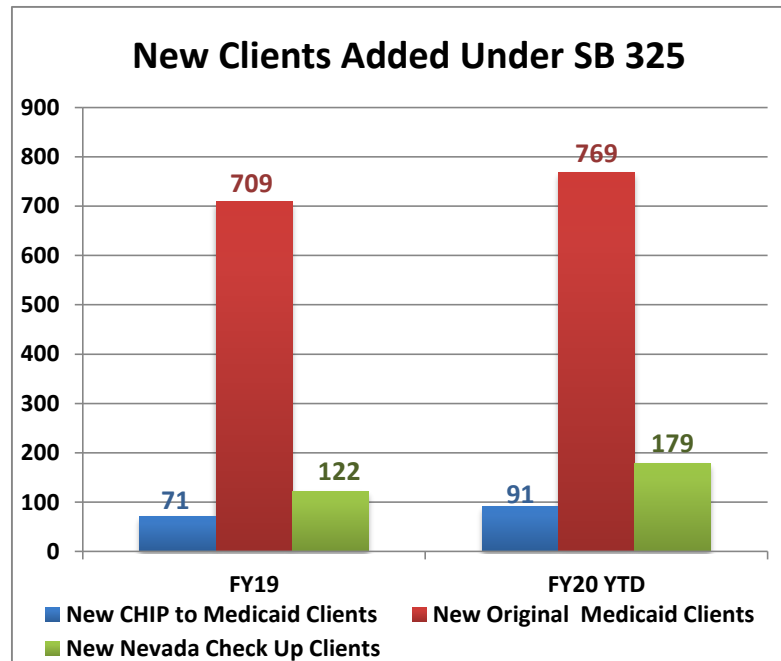


## New Clients Added Under SB 325

Month	New CHIP to Medicaid Clients	New Original Medicaid Clients	New Nevada Check Up Clients	Total New Clients
Jul-18	46	521	69	636
Aug-18	55	594	82	731
Sep-18	59	597	89	745
Oct-18	56	638	91	785
Nov-18	60	688	99	847
Dec-18	71	769	114	954
Jan-19	72	786	154	1,012
Feb-19	86	790	156	1,032
Mar-19	88	781	163	1,032
Apr-19	86	778	139	1,003
May-19	83	789	149	1,021
Jun-19	86	772	164	1,022
Jul-19	91	769	179	1,039
Aug-19				
Sep-19				
Oct-19				
Nov-19				
Dec-19				
Jan-20				
Feb-20				
Mar-20				
Apr-20				
May-20				
Jun-20				
Jun-20				

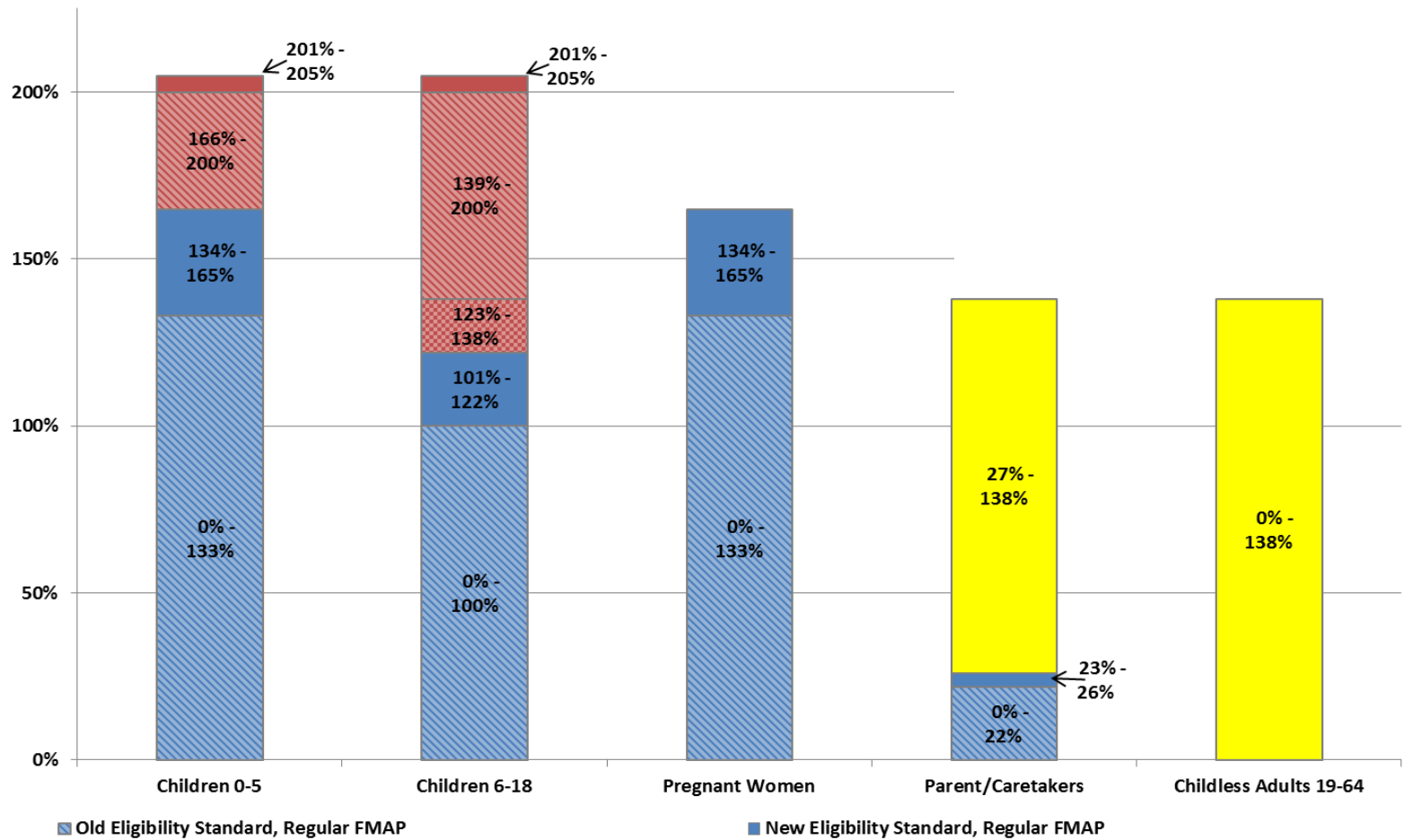
### Fiscal Year Averages

Fiscal Year	New CHIP to Medicaid Clients	New Original Medicaid Clients	New Nevada Check Up Clients	Total New Clients
FY19	71	709	122	902
FY20 YTD	91	769	179	1039



SB 325 allowed alien children who are younger than 18 to enroll in Medicaid programs or Nevada Check Up without the 5-year waitout period.

# Medicaid Eligibility and FMAP



2019 Federal Poverty Guidelines		
FPL	Household Size 1	Household Size 4
22%	\$2,748	\$5,665
26%	\$3,247	\$6,695
100%	\$12,490	\$25,750
122%	\$15,238	\$31,415
133%	\$16,612	\$34,248
138%	\$17,236	\$35,535
165%	\$20,605	\$42,488
200%	\$24,980	\$51,500
205%	\$25,605	\$52,788

Department of Health and Human Services (DHHS)  
Office of Analytics

## Federal Medical Assistance Percentages (FMAP)

State Fiscal Year	FMAP	Enhanced (CHIP) FMAP	ACA Enhanced (CHIP) FMAP	New Eligibles FMAP
FY03	51.79%	66.25%		
	52.53%	66.77%		
FY04	54.30%	68.01%		
	55.34%	68.74%		
FY05	55.66%	68.96%		
FY06	55.05%	68.53%		
FY07	54.14%	67.90%		
FY08	52.96%	67.07%		
FY09	50.66%	65.46%		
	61.11%	72.78%		
FY10	50.12%	65.08%		
	63.93%	74.75%		
FY11	51.25%	65.87%		
	62.05%	70.44%		
FY12	55.05%	68.54%		
FY13	58.86%	71.20%		
FY14	62.26%	73.58%		100.00%
FY15	64.04%	74.83%		100.00%
FY16	64.79%	75.35%	92.60%	100.00%
FY17	64.74%	75.32%	98.32%	97.50%
FY18	65.48%	75.84%	98.84%	94.50%
FY19	65.09%	75.57%	98.57%	93.50%
FY20	64.17%	74.92%	89.29%	91.50%
FY21	63.74%	74.62%	77.49%	90.00%
FY22	63.71%	74.59%		90.00%
FY23	64.20%	74.94%		90.00%

*Note: The green cells reflect a 2.95% increase for the period April 2003 through June 2004. The blue cells reflect the ARRA stimulus adjusted FMAP for October 2008 through December 2010. Blended FMAP converts federal fiscal year and calendar year FMAP rates into state fiscal years and is used for budgeting purposes only. The FMAP values for FY21 through FY23 are projections. The ACA Enhanced (CHIP) FMAP ends in September 2020.*